



VENTUS OGI

CUTTING-EDGE OPTICAL GAS IMAGING CAMERA



Ventus OGI is an industry-leading, integration-ready 640 x 512 resolution MWIR camera core designed to detect and visualize hydrocarbon gases, including methane and propane.

DETAILS

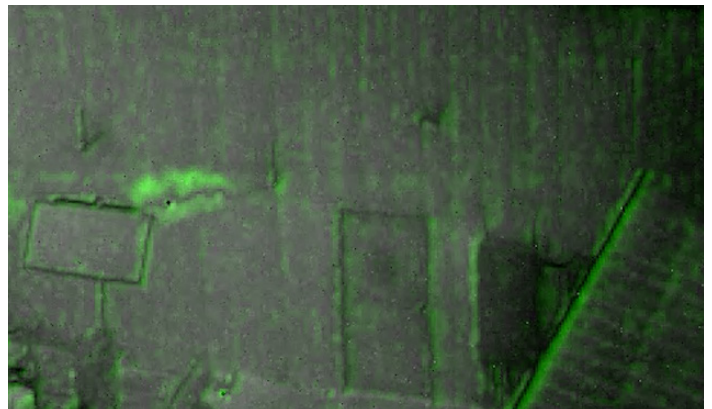
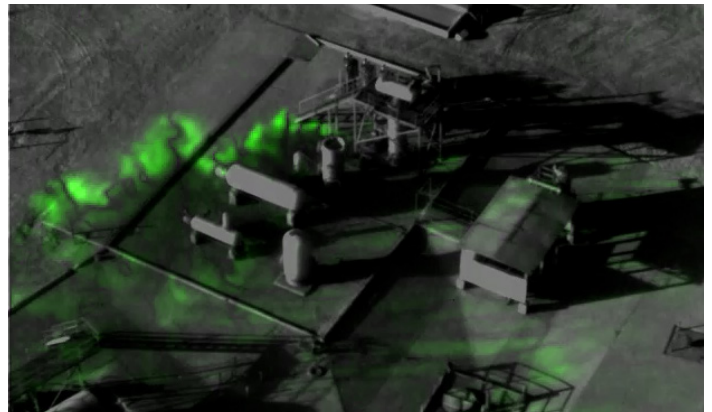
The Ventus OGI (Optical Gas Imaging) camera core brings together the very latest in detector, cooler and lens design. Available in 25 mm and 50 mm lens models, the system is built around a long-life HOT MWIR detector with a special narrow bandpass cold filter in a miniature closed-cycle Stirling cooler with an f/1.5 cold shield. The combination of these state-of-the-art components produces the smallest, lightest and most energy-efficient OGI camera core on the market, making Ventus OGI ideal for systems integration across a wide range of platforms and applications.

The camera is available with a choice of digital and analog inputs/outputs and serial or ethernet camera control. Advanced image processing features include Gas Enhancement Mode, local area processing, dynamic contrast enhancement, noise reduction filter, automatic gain and level control, 2x, 4x and 8x digital zoom, multiple color palettes and up to six calibration tables for different scene conditions.

APPLICATIONS

- + Visualize hydrocarbon gases
- + Quickly survey large areas
- + Aerial/ground systems
- + Around-the-clock surveillance
- + Designed for integrators
- + Image from a safe distance
- + Manned/unmanned systems
- + Meet EPA emissions requirements, reduce fines

- + Long-life HOT MWIR detector
- + 640 x 512 resolution / 15 μ m pixel pitch
- + 25 mm / 50 mm lens models
- + F 1.5 optic; 2x, 4x, 8x digital zoom
- + Gas Enhancement Mode colorizes leaks





VENTUS OGI

CUTTING-EDGE OPTICAL GAS IMAGING CAMERA

EXPORT CLASSIFICATION: DUAL USE

FEATURE SPECS

DETECTOR



Detector Type	High operating temp MWIR
Array Format	640 x 512
Pixel Pitch	15 Micron
Spectral Response	MWIR
Frame Rate	30 Hz
NETD	<50 mK

ENVIRONMENTAL



Size (L x W x H)	25 mm: 147 x 71 x 73 mm 50 mm: 138 x 71 x 77 mm
Weight	25 mm: 541g 50 mm: 570g
Input Voltage	12VDC
Power Dissipation	6W Typical 12W Peak
Operating Temperature	-35°C to +65°C
Mounting	¼-20 Tripod mount M3 tapped mounting holes
Certifications	25 mm: 0000aCertified (≤60 g/hr)



50 mm lens model

SYSTEM



Analog Video Output	NTSC/PAL
Digital Video Output	Uncorrected 14-bit CameraLink®
Digital Zoom/Pan	2x, 4x, 8x
Camera Control/Command Interfaces/System Control	Ethernet Serial (RS-422/RS-232)

LENS MODELS



F#	1.5
FOV or H/FOV	25 mm: 21.7° 50 mm: 11°
Focus	Thread focus

