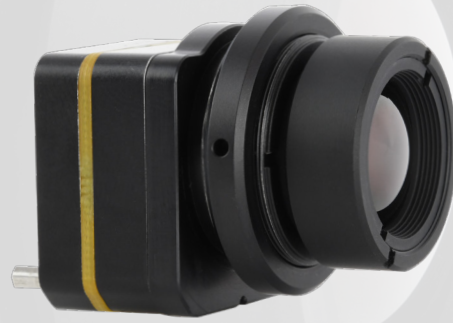


TENUM 640®

HIGH-PERFORMANCE TEN-MICRON PIXEL PITCH LWIR



The Tenum 640 represents the smallest pixel pitch long-wave infrared camera core on the market. It delivers striking detail and sensitivity in a compact, cost-effective package.

DETAILS

The Tenum 640 is a cutting-edge, competitively-priced camera core that delivers exceptional imagery and is supported by a respected team of industry experts.

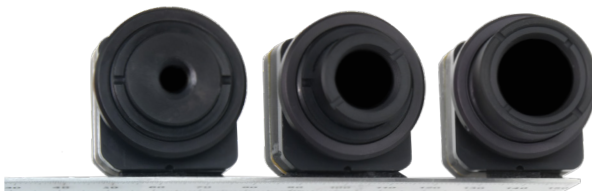
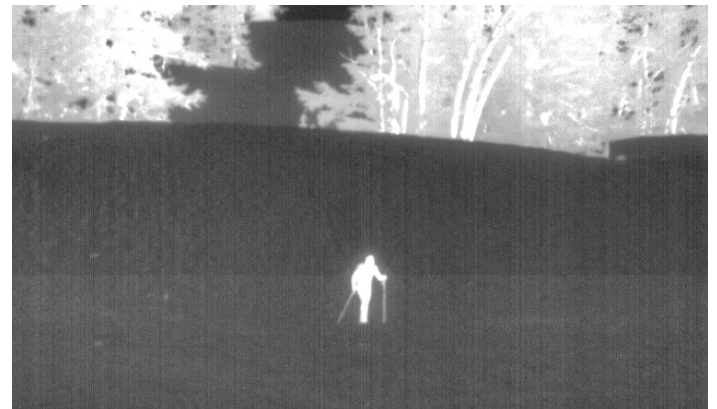
With a 10 micron pixel pitch and <30 mK NETD sensitivity, the Tenum 640 represents the latest evolution in low SWaP long-wave infrared technology. Made in the USA by Leonardo DRS, industry pioneers in high-sensitivity microbolometer technology, the series of 640x512 resolution cameras is distributed and supported in North America exclusively by Sierra-Olympia Technologies, Inc.

As a trusted supplier and OEM partner, Sierra-Olympia works directly with Tenum 640 customers to ensure successful systems integration, out-of-box operation, and follow-up support.

APPLICATIONS

- + Security and surveillance
- + Machine vision
- + Search and rescue
- + Law enforcement
- + OEM integration
- + Unmanned vehicles
- + Traffic monitoring
- + Precision agriculture
- + Medical imaging

- + 10 μ 640x512 uncooled VOx microbolometer sensor
- + 8 lens options + no-lens option available
- + Sensitivity <30 mK NETD with 3-D noise filter
- + 60 Hz frame rate (9 Hz option available)
- + Uncooled, compact, light, durable





TENUM 640®

HIGH-PERFORMANCE TEN-MICRON PIXEL PITCH LWIR

EXPORT CLASSIFICATION: DUAL USE

FEATURE SPECS

DETECTOR

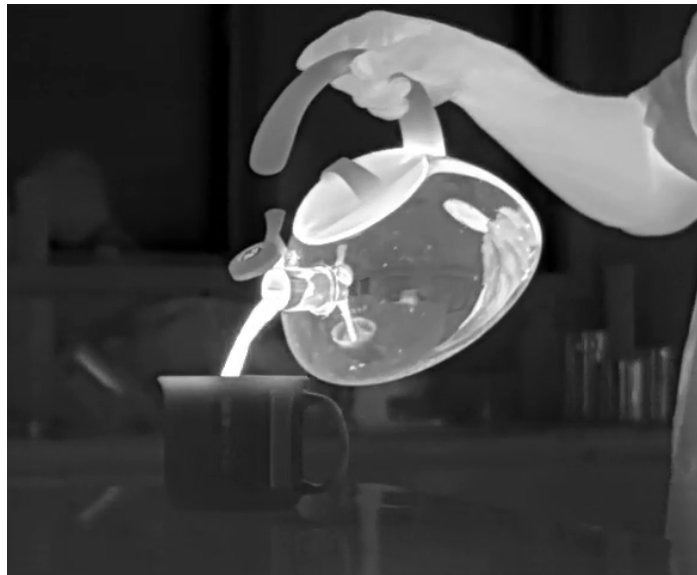


Detector Type	Uncooled VOx Microbolometer
Array Format	640 x 512
Pixel Pitch	10 Micron
Spectral Response	LWIR
Frame Rate	60 Hz (9 Hz option available)
Sensitivity (NEdT)	<20 mK (normalized, filtered) <50 mK (normalized)

ENVIRONMENTAL



Power Dissipation (nominal)	<1.2 W base configuration <1.4 with feature board
Operating Temp Range	-40°C to +70°C
Sealed Rating	IP 67 (Lens)



SYSTEM



Analog video Output	NTSC/PAL (req. feature board)
Digital Video Output	14-bit/8-bit LVCMOS or Camera Link®
NUC	1-point with shutter or through lens
Image Enhancement	Image Contrast Enhancement (ICE™) with gain and level bias controls
Color Palette Options	24-bit RGB & YUV (4,2,2) Superframe
Digital Zoom and Pan	Region of interest, E-zoom from 1X - 4X
Camera Control/Command Interfaces/System Control	UART/RS-232, USB 2.0
Other Electrical Interfaces	External sync
Input Voltage	3-5.5 V base configuration 4.5 - 18 V with feature board

LENS MODELS



	FOV	F/#
No Lens	No Lens	N/A
4.3 mm	90° x 72°	1.2
5.5 mm	70° x 56°	1.2
7.7 mm	50° x 40°	1.3
8.7 mm	41° x 33°	1.0
15 mm	25° x 20°	1.2
20 mm	18° x 15°	1.2
30 mm	12° x 10°	1.3
35 mm	10° x 8°	1.2

This is a product of Leonardo DRS, for which Sierra-Olympia Technologies, Inc. is the exclusive North American distributor. Specifications and descriptions subject to change without notice.