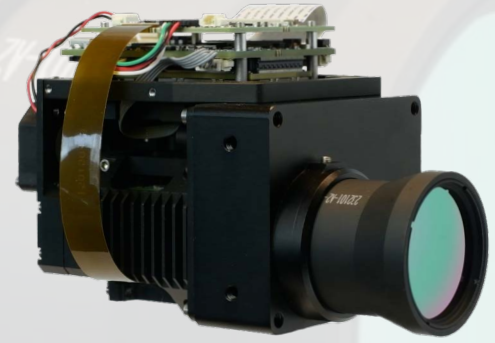


VENTUS HD6-FIXED

POWER CROSSED WITH PRECISION FOR UNCOMPROMISING PERFORMANCE



The Ventus HD6-Fixed is compact and Low-SWaP for airborne mission aboard crewed and uncrewed systems. Unmatched 6micron pixel pitch HD image with extended life MWIR cooler.

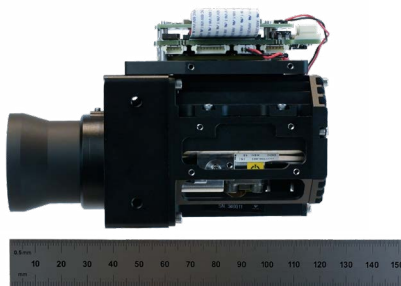
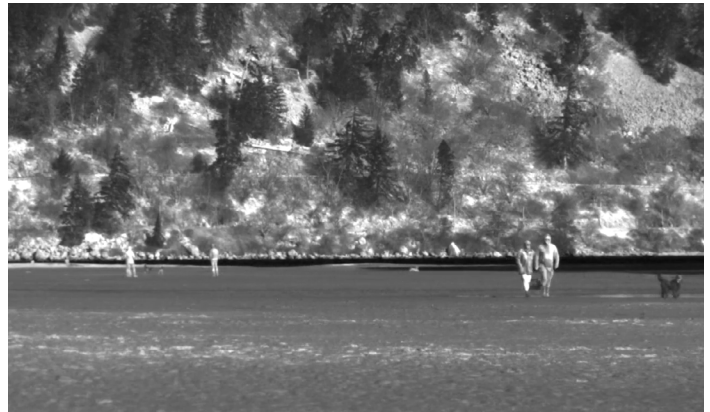
- + Extended Cooler Life
- + 1280 x 960 HD Format
- + Integrated Image Processing
- + Compact and Low-SWaP

DETAILS

Introducing the Ventus HD6-Fixed product family: potent yet compact fixed focal length HD MWIR cameras meticulously crafted for seamless integration. Small form factor allows for effortless inclusion into a wide variety of applications delivering unparalleled capabilities within convenient packages. The standard configuration includes a video encoder/processor for centralized interfaces and advanced image processing. A core configuration provides a SWaP optimized option.

APPLICATIONS

- + Low-SWaP
- + Critical Infrastructure
- + Airborne
- + Dismounted Sensors
- + Terrestrial Surveillance
- + Crewed/Uncrewed Systems





VENTUS HD6-FIXED

POWER CROSSED WITH PRECISION FOR UNCOMPROMISING PERFORMANCE

EXPORT CLASSIFICATION: DUAL USE

FEATURE SPECS

DETECTOR



Detector Type	Mercury Cadmium Telluride
Array Format	1280 x 960
Pixel Pitch	6 Micron
Spectral Response	MWIR
Frame Rate	30 Hz default 60 Hz capable
Bit Depth	14-bit
NETD	30 mK Typical

ENVIRONMENTAL



Input Voltage	12 VDC
Power Dissipation	Std. Config: 11W typical 14W During Cooldown Core Config: <5.6W typical, 10.08W Max During Cooldown
Operating Temperature	Std. Config: -20°C to +40°C Core Config: -40°C to +71°C
Mounting	1/4-20 Tripod Mount, and M3 tapped holes

LENS OPTIONS



	No Lens	No Lens (Core)	30 mm Lens	30 mm Lens (Core)
EFL	N/a	N/a	30 mm	30 mm
F#	N/a	N/a	2.6	2.6
FOV	N/a	N/a	14.3° x 10.75°	14.3° x 10.75°
Focus	N/a	N/a	Threaded Focus	Threaded Focus
Lens Coating	N/a	N/a	Athermalized, High-Performance AR Coating	Athermalized, High-Performance AR Coating
Size (L x W x H)	105 x 84 x 81 mm	95 x 89 x 58 mm	131 x 84 x 81 mm	122 x 89 x 58 mm
Weight	611g	488g	701g	580g

SYSTEM



Digital Video Output	HDMI, HDSI (optional) CameraLink®
IP Video Output	Ethernet (H.264, H.265)
NUC	2-point NUC, 1-point with shutter, Bad Pixel Replacement
Digital Zoom / Pan	1X to 16X

